



Lithium LiFePO₄ Battery

LFP12.8-200 12.8V 200Ah

LiFePO₄ Lithium Battery

Longer Cycle Life: 5 times longer cycle life than VRLA battery.

Light Weight: About 40% weight of VRLA battery

Quick Charge: Short charge time compared with VRLA battery.

Low Self-Discharge: Lower self-discharge compared with VRLA battery,

Superior Safety: Multi-protection methods built inside to protect the battery from overcharge, over discharge and short circuit situation.

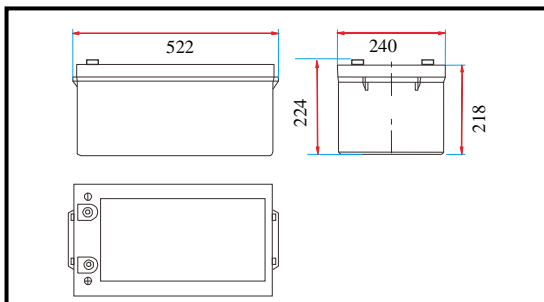
High Efficiency: Higher energy efficiency at 92% compared to VRLA battery at 80%.



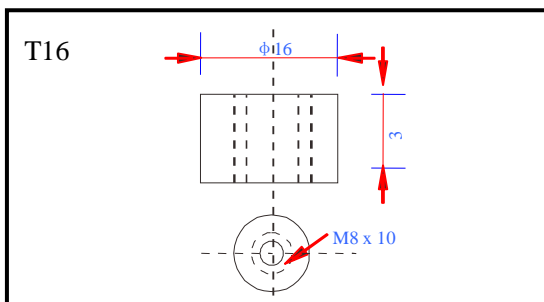
● Specification

Nominal voltage		12.8V
Nominal capacity		200Ah
Dimension	Length	522mm
	Width	240mm
	Height	218mm
	Total height	224mm
Approx. weight		21.5kg

● Outer dimension (mm)



● Terminal Type (mm)

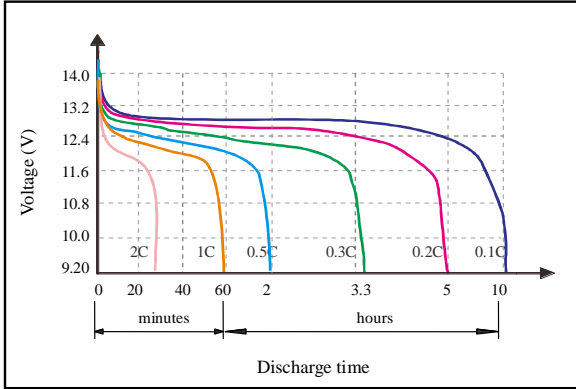


● Characteristic

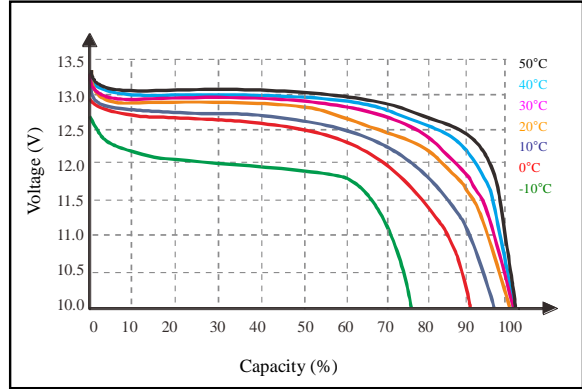
Electrical Parameters (25°C)	Rated Voltage	12.8V
	Rated Capacity (C ₅)	200Ah@ 25°C
	Energy	2560Wh
	1 Month Self Discharge	<3%
	Charge Efficiency	99.5%@ 0.2C
	Discharge Efficiency	96-99%@ 1C
Terminal type		T16
Internal resistance (Fully charged, 25°C)		≤25mΩ
Cycle life		>2000 cycles @ 0.2C 100% DOD
Capacity affected by temperature	40°C	101%
	25°C	100%
	0°C	90%
	-10°C	75%
Nominal operating temperature		25°C± 3°C
Operating temperature range	Discharge	- 20°C~ 60°C
	Charge	0°C~ 45°C
	Storage	0°C~ 40°C
Water Dust Resistance		IP65
Charge Voltage		14.6V
Standard Charge Mode (25°C±2°C, <75%RH)		0.2CA Constant Current to 14.6V, then Constant Voltage 14.6V until the current drops to 0.02CA, before use, rest 30 minutes
Charge Current		40A
Maximum Charge Current		100A
Charge Cut off Voltage		14.6V
Continuous Discharge Current		100A
Maximum Pulse Current		650A (<100ms)
Discharge Cut Off Voltage		11.2V
Communicate Protocol (optional)		SMBus/RS485/RS232
SOC (optional)		LED
Application connection		1 string 1 parallel
Mechanical	Cells	4 Strings
	Container	ABS

LFP12.8-200 12.8V 200Ah

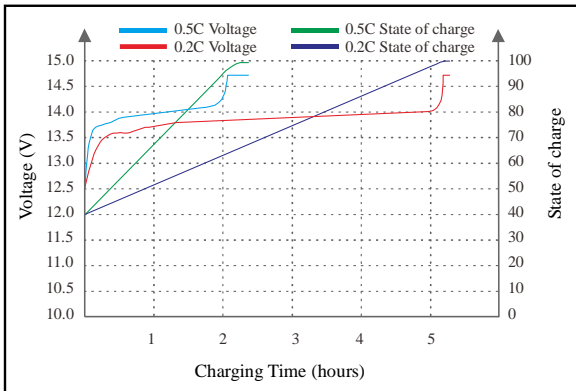
Discharge characteristics(25°C)



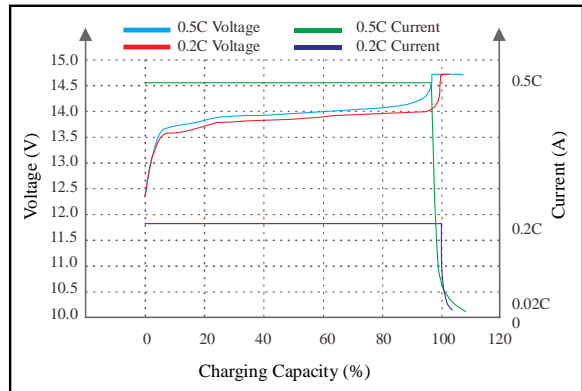
Temperature effects on discharge characteristics (0.5C)



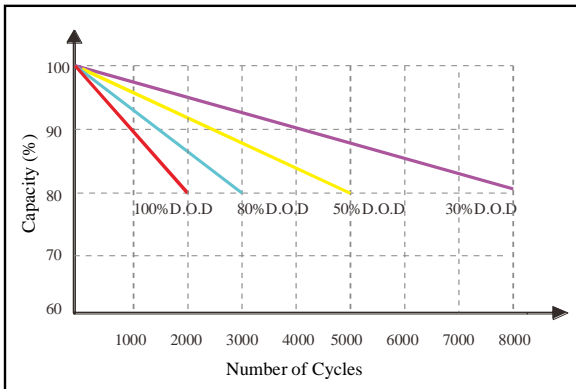
State of Charge Curve (25°C)



Charging characteristics



Cycle Life on DOD (25°C)



Self Discharge Characteristics Curve

